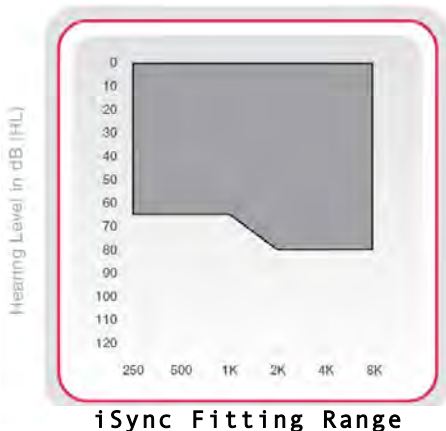


## Fitting the iSync (Invisible-In-The-Canal (IIC) style)



AudioSync Hearing Technologies is proud to introduce the **iSync**, a new style of instrument, called the **invisible-in-the-canal (IIC)**. The **iSync** is offered as a Now NT 325 with 35 dB of gain and a wide fitting range, taking advantage of the deep insertion of the instrument. Basic programming of the **iSync** can be accomplished with either wired or wireless connection – in the office or remotely. **T<sup>2</sup>** (touch-tone) technology is utilized to accomplish the wireless programming of the **iSync**. For wired programming, a specially designed programming cable is available.

### **Wireless Programming (T<sup>2</sup> Remote and T<sup>2</sup> On Demand)**

**T<sup>2</sup> Remote** programming allows the patient to make temporary changes to the programmed settings by using a DTMF (Dual Tone Multi Frequency) compatible phone. **T<sup>2</sup> Remote** programming allows the patient to make volume and memory changes, as well to mute/un-mute the hearing aid. A visual guide of the phone keys used to control **T<sup>2</sup> Remote** functionality is included in Inspire software, as well as the patient's instruction manual. Once the patient opens and closes the battery door, changes that have been made to the programmed settings are lost and the hearing aid reverts to the programmed settings.

**T<sup>2</sup> On Demand** allows the professional to conduct a remote programming session and make permanent changes to the hearing aids using a DTMF-compatible telephone. This feature is designed to provide a method for convenient follow-up adjustments without requiring the patient to return to the office.

The adjustable parameters for **T<sup>2</sup> On Demand** are based on the same settings found on the **Quick Fit** screen of the Inspire software. Additionally, we recommend that you perform the remote programming sessions monaurally and in a relatively quiet environment. (All changes made through either **T<sup>2</sup> Remote** or **T<sup>2</sup> On Demand** are tracked through Data Log.)

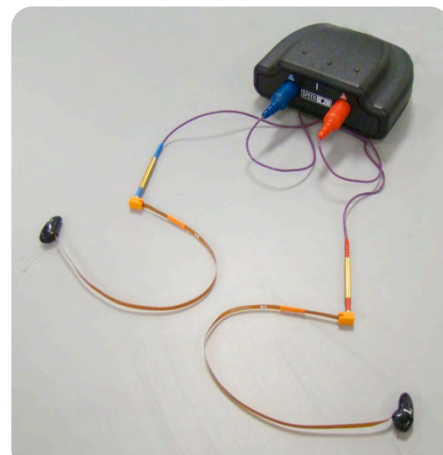
**T<sup>2</sup> Remote** and **T<sup>2</sup> On Demand** will be enabled by default in Inspire® 2010.2 for all **iSync** hearing instruments with the default **T<sup>2</sup> On Demand** activation code of #99.

Below is a table of the **T<sup>2</sup> On Demand** programming adjustments and telephone keypad codes. For a step-by-step procedure and more complete description of **T<sup>2</sup> Remote** and **T<sup>2</sup> On Demand** programming, please see the **Telehealth On Demand Tech Tip**.

Adjustment	Code	Adjustment	Code	Programming Command	Code
Decrease Occlusion Control	#13	Increase Occlusion Control	#16	Begin Session	#99
Decrease Lows	#11	Increase Lows	#14	Repeat Adjustment	#00
Decrease Highs	#12	Increase Highs	#15	Store Changes	#01
Decrease Gain	#18	Increase Gain	#10	Change Memory	#06
Decrease Output	#21	Increase Output	#24	Undo All Adjustments	#02
				End Session	#09

### ***Wired Programming (using Inspire 2010.2)***

When programming the **iSync** with Inspire software, we recommend you use the specially designed programming strips. These strips attach to the programming cables used for all other Now NT products. The strips are inserted behind the battery door as with other custom products in the Now NT product line. Note: The **iSync** can be programmed with or without a battery.

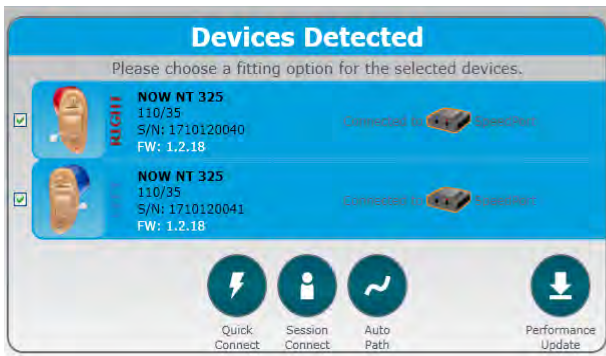


**iSync instruments with programming strips**

#### **Programming Steps:**

- 1) Make sure the extended programming strips are inserted into the hearing instrument(s).
- 2) With the Inspire software open, attach the programming cables to the programming strips.
- 3) Insert the hearing instruments into the patient's ear. *(Note: Oto-Ease may be helpful for insertion of the iSync.)*

*(Note: Many have found use of collar clips helpful to avoid flex strips from inadvertently being pulled out of the patient's ears during programming. If you need collar clips, please contact Customer Service for assistance in receiving a set.)*



4) On the **Get Started** screen, the **iSync** will read as Now NT 325 CICs. Select the **Quick Connect** icon to begin programming the **iSync** hearing aids.

5) On the **Quick Fit** screen you will notice that the response curves are offset from the targets. *This is done intentionally. **Do not select Best Fit***, as most patients will find the actual match to target as too strong for this deep insertion product. Program as you would any other hearing

instrument and save the session in the database. When programming is complete, disconnect the programming cable from the flex strip and use the removal strand to remove the hearing instrument from the patient's ear.

## Best Fit



The **iSync IIC** is shipped from the factory pre-programmed and ready to be fit. Initial programming is Best Fit for a CIC model, with appropriate offsets applied to the e-STAT fitting formula. These offsets account for the deep insertion of the device and the gain variations from traditional CIC products. It is not recommended that the product be fit using the default Best Fit target, as most patients may report that the hearing aids are providing more

amplification than needed.

By default, **iSync** products are built with the switchless 2-memory option. The first memory is programmed as a Normal memory and the second memory is programmed with an Automatic Telephone Response (ATR) setting.

**iSync** products are configured as switchless 4-memory devices. The memories will be pre-programmed with the following environments:

- 1) Normal
- 2) Crowd
- 3) Restaurant/ Party
- 4) Telephone